

Brymon Court

31-32 Montagu Square London W1H 2LH

- Available immediately
- First floor
- Porter
- Overlooking Montagu Square
- Marylebone High Street walking distance
- Furnished
- Lift
- Newly decorated
- Marble Arch station five minutes away
- Close to Hyde Park

£1,269 Per Week

Brymon Court

31-32 Montagu Square London W1H 2LH



Available immediately on a furnished basis is this well presented purpose built first floor flat with lift and porter overlooking Montagu Square in Marylebone.

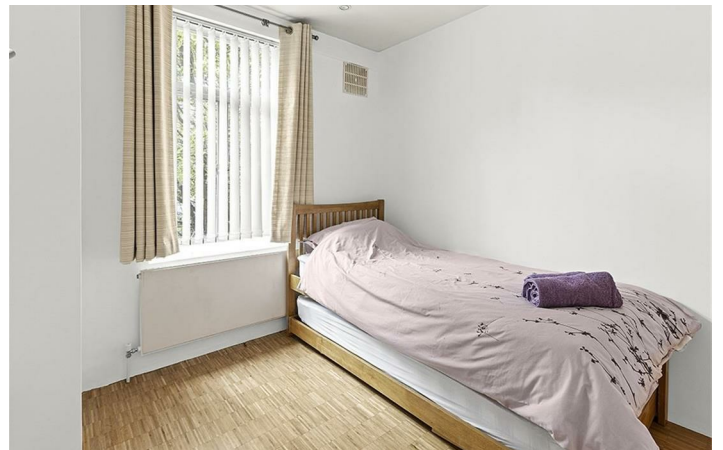
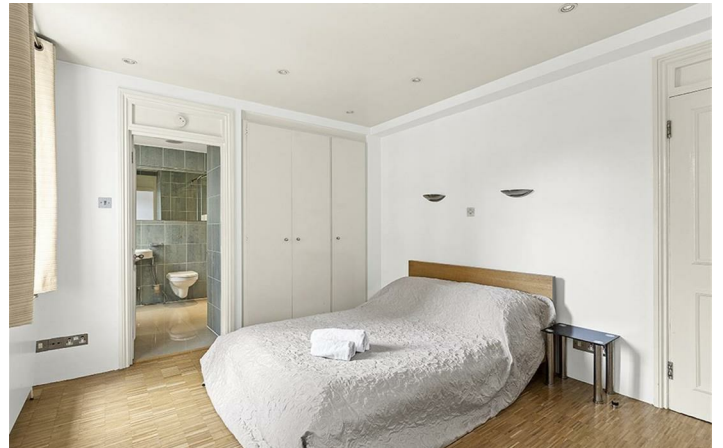
The 115 sqm property, which has wood flooring throughout, briefly comprises an entrance hall, a dual aspect reception room with ample space for dining, fully fitted kitchen with integrated appliances including a dishwasher, three double bedrooms each with built in wardrobes (two of which benefit from a fully tiled ensuite bathroom) and further a fully tiled bathroom off the hallway.

Brymon Court is a secure portered building on exclusive Montagu Square widely regarded as one of London's finest garden squares and is within walking distance of Marble Arch (Central line) station.

Marylebone High Street with its boutique shops, independent cafes, bars and highly regarded restaurants is close by whilst open space can be enjoyed in glorious Regent's Park.



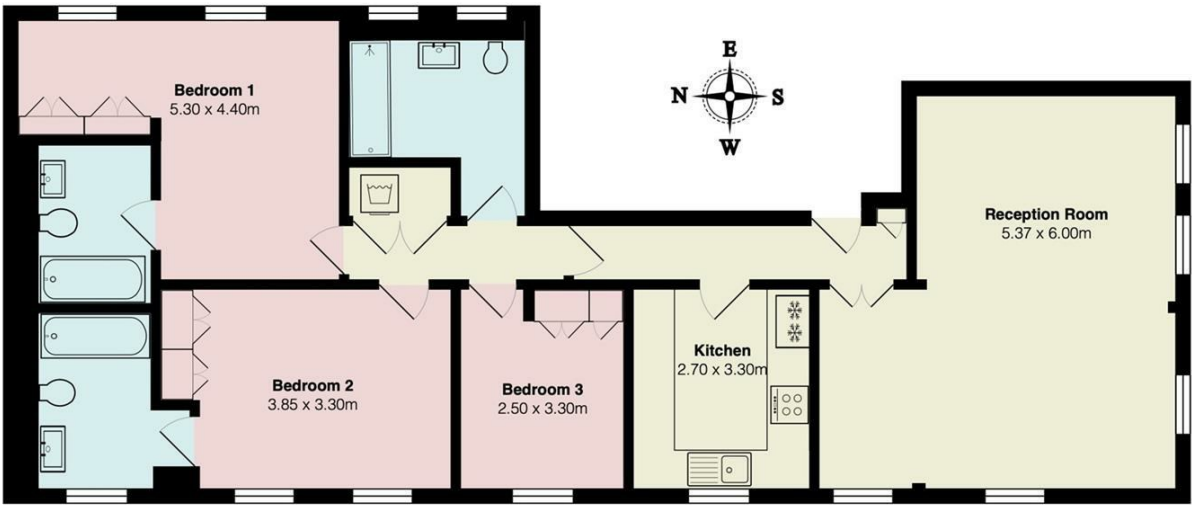
Directions





Floor Plan

Brymon Court, 31-32 Montagu Square, London W1H 2LH



Total Area: 115.0 m²
All measurements are approximate and for display purposes only.
© The Property Photography Company Ltd

These particulars, whilst believed to be accurate are set out as a general outline only for guidance and do not constitute any part of an offer or contract. Intending purchasers should not rely on them as statements of representation of fact, but must satisfy themselves by inspection or otherwise as to their accuracy. No person in this firms employment has the authority to make or give any representation or warranty in respect of the property.

