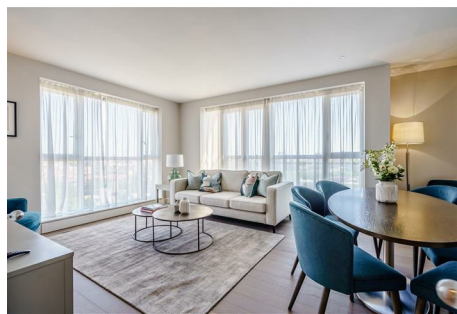
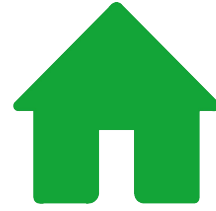


OUTLET

RESIDENTIAL



Palace Wharf

Rainville Road London W6 9UF

- First-floor apartment facing the courtyard set within this newly converted warehouse
- Gated development on the River Thames
- Underfloor heating
- A bright open-plan kitchen and reception room
- Barons Court, Putney Bridge, and Fulham Broadway Underground Stations minutes away.
- Available immediately
- The fully fitted Metris Kitchen is complete with Miele appliances
- Smart Home visual system
- A close walk to Hammersmith Overground
- Flexible Rental Terms

£1,025 Per Week

Palace Wharf

Rainville Road London W6 9UF



This is a stunning brand-new interior designed, two-bedroom, two-bathroom first-floor apartment facing the courtyard set within this newly converted warehouse, gated development on the River Thames. Available immediately

The apartment boasts a bright open-plan kitchen and reception room, a master bedroom with an en-suite shower room, and an additional guest bathroom. The fully fitted Metris Kitchen is complete with Miele appliances including an integrated dishwasher, washer/dryer, full height fridge freezer, oven, hob, integrated extractor fan, and a Miele wine cooler.

The complete bathroom suites come with underfloor heating while the bedrooms boast bespoke mirrored wardrobes and automatic lighting. Further benefits of the apartment include a Smart Home visual system, a digital video door entry system, and pre-wiring for Sky + TV.

With its riverside location, Palace Wharf is also conveniently close to several transport links including Hammersmith Overground and Underground Station, Barons Court, Putney Bridge, and Fulham Broadway Underground Stations, along with several regular and varied bus services which further improve accessibility.

There is a dedicated building manager who is on hand to assist with any property-related issues. In addition, there is a dedicated team of maintenance experts and provide a 24-hour emergency helpline.



Directions





Floor Plan

These particulars, whilst believed to be accurate are set out as a general outline only for guidance and do not constitute any part of an offer or contract. Intending purchasers should not rely on them as statements of representation of fact, but must satisfy themselves by inspection or otherwise as to their accuracy. No person in this firms employment has the authority to make or give any representation or warranty in respect of the property.

