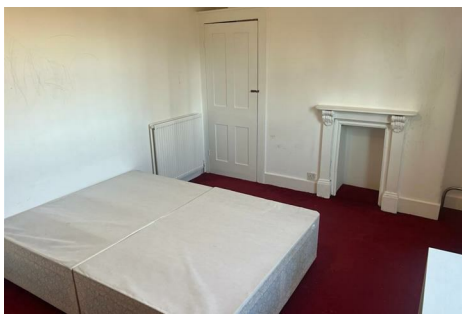
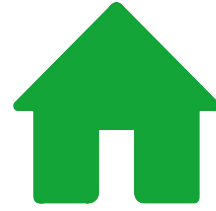


OUTLET

R E S I D E N T I A L



Tomlins Grove

London E3 4NX

- Available immediately
- First and second floor
- Two double bedrooms
- Bow Road and Bow Church station walking distance
- Close to local pubs and restaurants
- Part-furnished
- Period features
- Kitchen/breakfast room
- Good choice of shops nearby
- Tower Hamlets Cemetery Park minutes away

£392 Per Week

Tomlins Grove

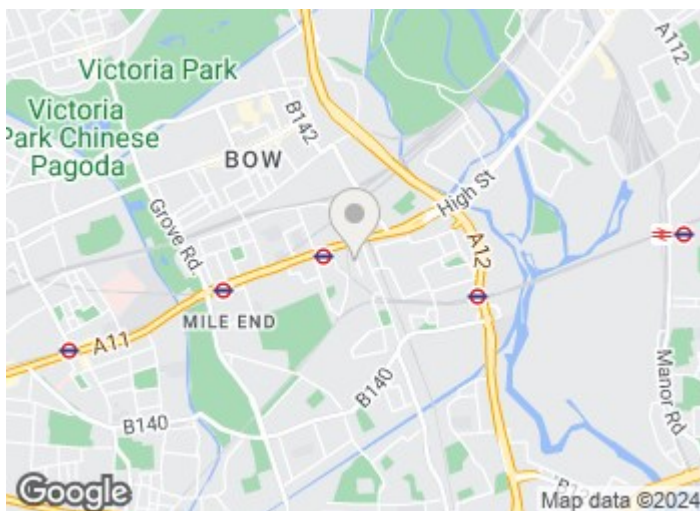
London E3 4NX



Available immediately on a part-furnished basis is this first and second floor flat within walking distance of Bow stations.

The property, which retains many original features, comprises a reception room, fitted kitchen/breakfast room two double bedrooms and a shower room.

Tomlins Grove is a residential street located a short walk from Bow Road (District and Hammersmith & City lines) and Bow Church (DLR) stations, a good choice of shops on Bow Road including a Tesco Express, welcoming local pubs and restaurants whilst open space can be enjoyed in nearby Tower Hamlets Cemetery Park a restored Victorian cemetery and local nature reserve.



[Directions](#)





Floor Plan

These particulars, whilst believed to be accurate are set out as a general outline only for guidance and do not constitute any part of an offer or contract. Intending purchasers should not rely on them as statements of representation of fact, but must satisfy themselves by inspection or otherwise as to their accuracy. No person in this firm's employment has the authority to make or give any representation or warranty in respect of the property.

